



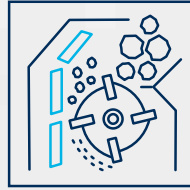
MADE IN GERMANY



INDUSTRIAL TECHNOLOGIES

CRUSHING & MIXING





**INDUSTRIAL
TECHNOLOGIES**

- CRUSHING & MIXING
- TUNGSTEN CARBIDE
- RAIL TRACK CONSTRUCTION
- INDUSTRIAL SOLUTIONS



IN USE WORLDWIDE



CONTENT

WEAR PARTS FOR VSI CRUSHERS	10
WEAR PARTS FOR ROLL CRUSHERS & SIZERS	14
WEAR PARTS FOR HAMMER CRUSHERS	18
WEAR PARTS FOR MIXERS & VIBRATING TABLES	20

TUNGSTEN CARBIDE AND STEEL

Steel and carbide are two materials with totally different expansion coefficients when subjected to heat. Nevertheless, it is of steel and tungsten carbide that our tools are made, with tungsten carbide for the wear-resistant tip, and steel for the tool shank. Since tools reach high temperatures during use, extreme tensile stresses are generated. These stresses are absorbed by a special brazing material that joins the tungsten carbide tip to the steel section.

We have developed our own methods and systems for this brazing process, which is carried out on fully automated machines with the process covered in an inert protective gas. Manufacturing parameters are fully monitored and documented to ensure consistent quality. Afterwards, brazing shear strengths are checked to ensure that our "Masters of the construction site" lose no time due to broken tools!



BETEK HIGH-TECH TOOLS



1

CUSTOMER SERVICE

- Efficient, customised solutions based on flexible structures
- Personalised, quick response to customer requirements



2

DEVELOPMENT & CONSTRUCTION

- Quick creation of samples and prototypes
- Competitive pricing thanks to close cooperation with all production units



3

TUNGSTEN CARBIDE MANUFACTURING

- High-purity raw materials are used for high strength
- Consistently high, pore-free tungsten carbide quality through precise process control thanks to years of experience and know-how



4

SOLDERING PRODUCTION UNIT

Production facilities and processes specially developed to perfection by experts in the combination of tungsten carbide and steel



5

AUTOMATION

Maintaining a competitive edge on the global market thanks to a high degree of automation and flexible manufacturing facilities



6

QUALITY ASSURANCE

Continuous quality testing of the entire manufacturing chain all the way up to the installation site, in conformity with DIN ISO 9001:2000 and DIN EN ISO 14001



7

TRAINING

User training courses at BETEK or on-site for sustainable, long-term commercial success and customer satisfaction



8

LOGISTICS

Quick responses thanks to:

- the use of the very latest IT and enhanced logistics networking
- Standard products kept in stock

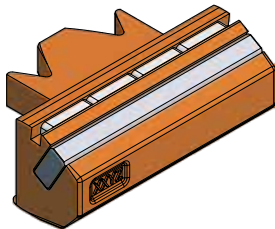
OUR KNOW-HOW COMBINED WITH STATE-OF-THE-ART PRODUCTION TECHNOLOGIES GUARANTEES THE FINEST QUALITY, MADE IN GERMANY



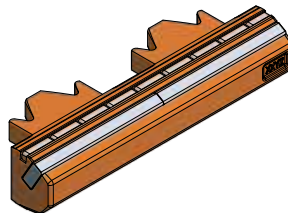
WEAR PARTS FOR VSI CRUSHERS

> SANDVIK

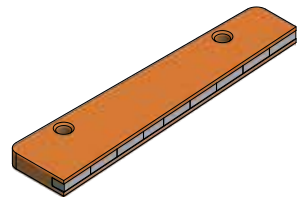
BETEK's tungsten carbide wear parts have been specifically developed for your VSI crusher. Optimized design techniques, together with brazed bonds between our tungsten carbide and the steel body result in a tremendous productivity gain as the parts last much longer than conventional ones.



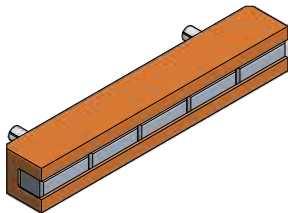
■ **BBM95**
BBM 110x70x55
ROTOR TIP 110 MM



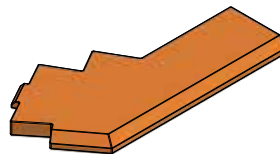
■ **BBM282**
BBM 220x70x49
ROTOR TIP 220 MM



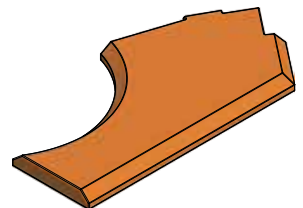
■ **BBM250**
BBM 220x50x12
TRAIL PLATE 220 MM



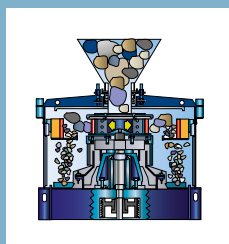
■ **BBM251**
BBM 128x20x20
BACK-UP TIP



■ **BBM278**
BBM 350x171x20
WEAR PLATE LOWER



■ **BBM279**
BBM 360x181x20
WEAR PLATE UPPER

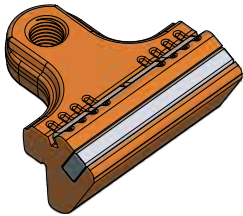


ROTOR TIPS

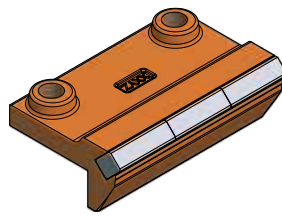
Betek tungsten carbide rotor tips are engineered specifically for each type of VSI-crusher and protect the rotor edges against wear.

WEAR PARTS FOR VSI CRUSHERS

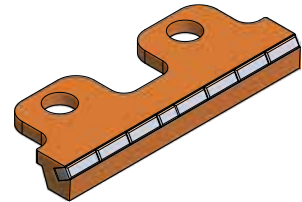
► METSO | BARMAC



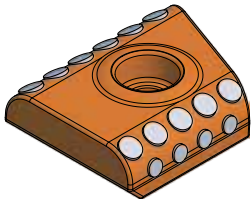
■ **BBM160**
BBM 105x103x55A
ROTOR TIP



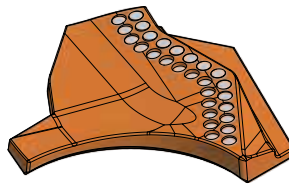
■ **BFZ123**
BFZ 155x102x17
ROTOR TIP



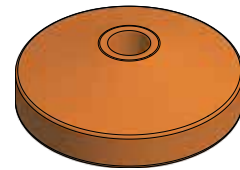
■ **BBM176**
BBM 192x70x23
BACK-UP TIPS LONG AND SHORT



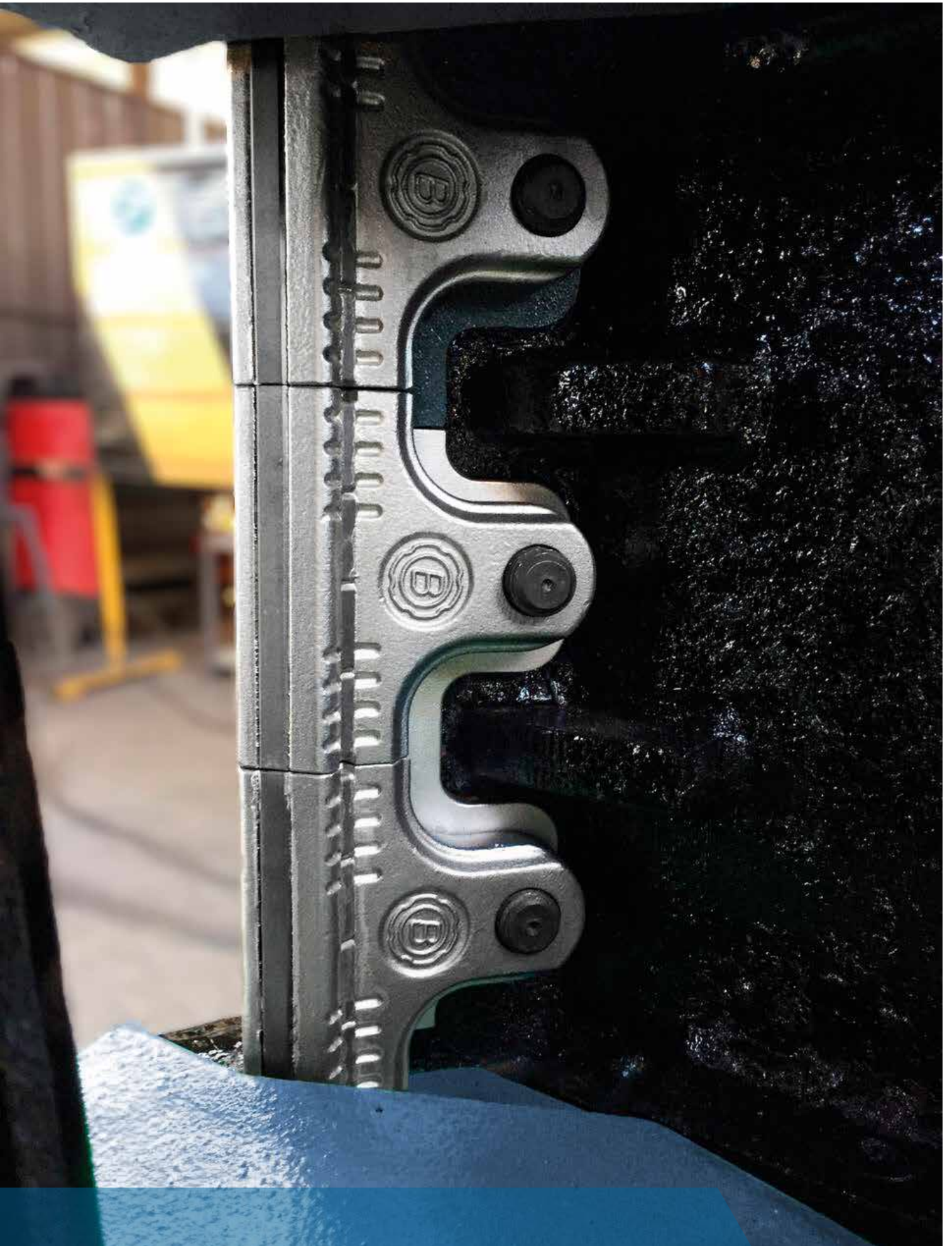
■ **BBM183**
BBM 104x97x37
CAVITY WEAR PLATES
OUTER AND MIDDLE



■ **BBM253**
BBM 303x273x36
WEAR PLATES UPPER
AND LOWER

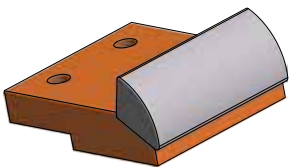


■ **BBM275**
BBM 300x98
DISTRIBUTOR PLATE
HEAVY CONE

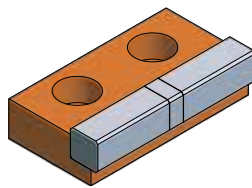


WEAR PARTS FOR VSI CRUSHERS

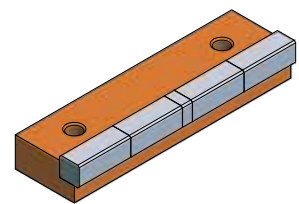
> SBM | MFL



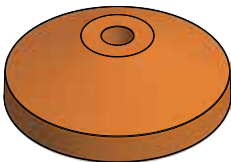
▪ **BBM339**
BBM 125x107x59
ROTOR TIP



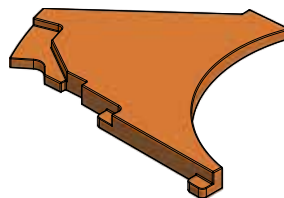
▪ **BBM314**
BBM 115x65x30
BACK-UP TIP



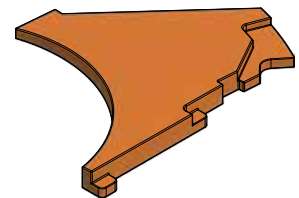
▪ **BBM315**
BBM 220x65x35
TRAIL PLATE



▪ **BBM259**
BBM 429x143
DISTRIBUTOR CONE

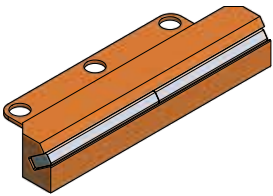


▪ **BBM260**
BBM 434x343x35
WEAR PLATE UPPER

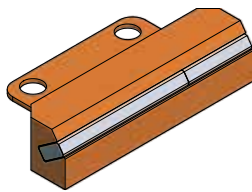


▪ **BBM261**
BBM 434x343x35
WEAR PLATE LOWER

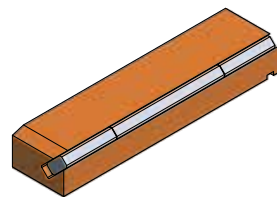
► OTHERS



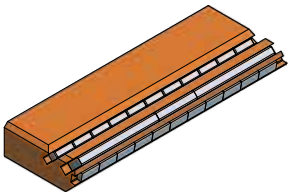
▪ **BBM99**
BBM 224x78x38
KPI-JCI



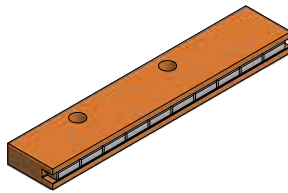
▪ **BBM150**
BBM 157x78x38
KPI-JCI



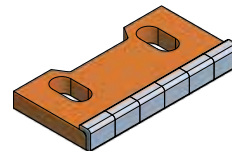
▪ **BBM221**
BBM 214x50x30
TEREX CEDARAPIDS



▪ **BBM305**
BBM 300x100x40
AUSPACTOR AND ORESIZER



▪ **BBM215**
BBM 265x50x20
AUSPACTOR

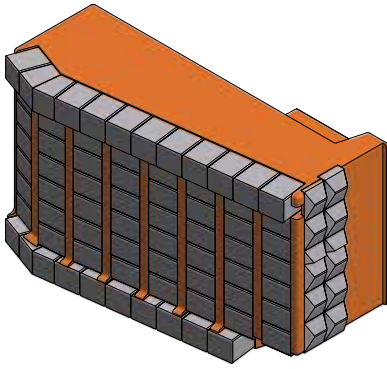


▪ **BBM64**
BBM 102x53x13
JÄCKERING

WEAR PARTS FOR VSI CRUSHERS

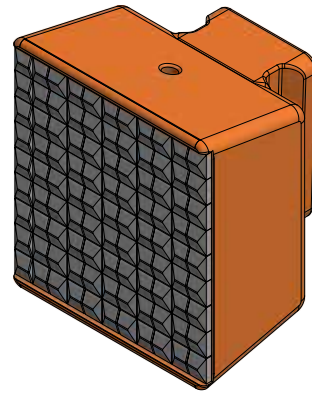
► OPEN ROTORS

BETEK's impeller shoes for open VSI rotors equipped with tungsten carbide are a premium alternative to standard high-chrome or ceramic steel impellers.



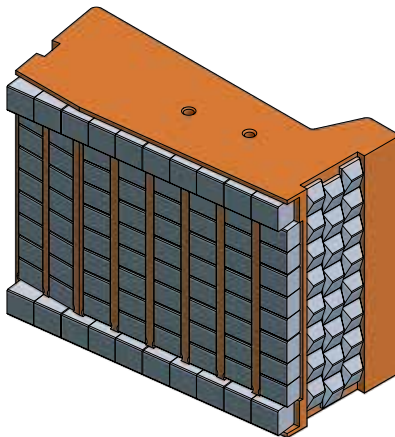
- **BBM170**

BBM 300x180x200
MAGOTTEAUX



- **BBM316**

BBM 277x250x199
MAGOTTEAUX



- **BBM239**

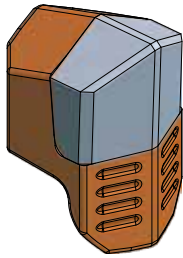
BBM 309x240x176
ISC



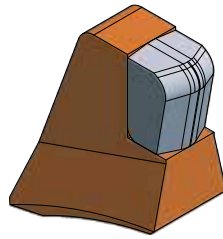
WEAR PARTS FOR ROLL CRUSHERS AND SIZERS

► WELDING TEETH

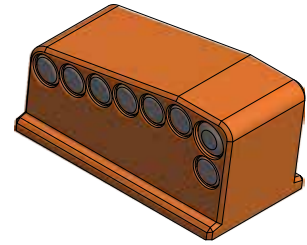
BETEK's tungsten carbide weld-on teeth for roll crushers are used to crush various minerals. The long-lasting, sharp cutting edges guarantee consistently high productivity for your crushing needs.



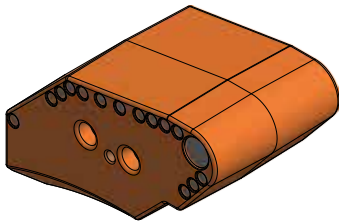
■ **BBM79**
BBM 88x50x62



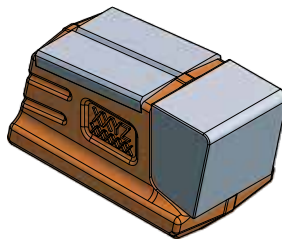
■ **BBM292**
BBM 116X97X45



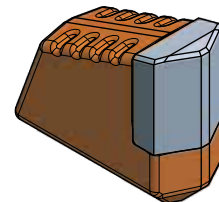
■ **BBM274**
BBM 109X64X50



■ **BBM293**
BBM 248X165X146



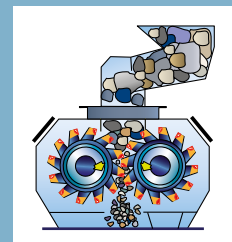
■ **BBM177**
BBM 101x60x50



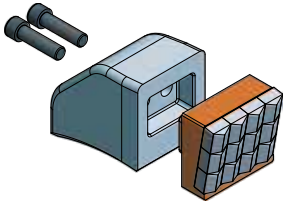
■ **BBM75**
BBM 25x50

CRUSHER TEETH

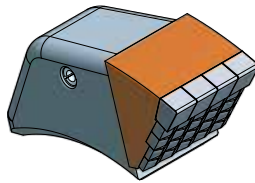
Betek's crushing tooth has proven itself to be very efficient in various applications, including the crushing of limestone, coal and various types of ore. In order to ensure optimum results, the teeth can be fitted to suit any particular application and machine.



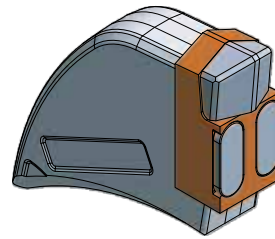
► QUICK-CHANGE SYSTEMS



■ **E2699**
BBM 203x108x150



■ **E2622**
BBM 345x140x130



■ **BHS62 + BFS142**
BBM 150x40x110



IMAGE SOURCE: Imperial Oil

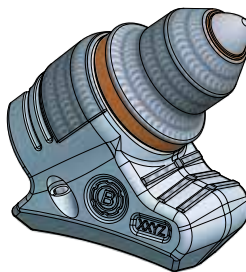
WEAR PARTS FOR ROLL CRUSHERS AND SIZERS

► ROUND SHANK CUTTER BITS

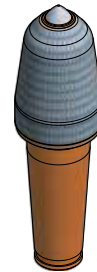
BETEK's round shank cutter bits come with additional tungsten carbide (WCS) hard facing. In highly abrasive applications, our premium hardfacing of the steel body guarantees much better performance over ferrochromium (FeCr) hardfacing.



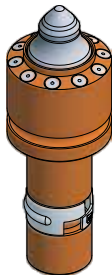
■ **BSR331**
BG38SW-25.7077
WITH HARD FACING



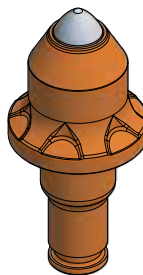
■ **BSR331 + BHR257**
BG38SW-25.7077 + B38.7845
HOLDER SYSTEM



■ **BSR218**
BG52W-22.70122P
WITH HARD FACING



■ **BGB66**
B47GK100LK71/2

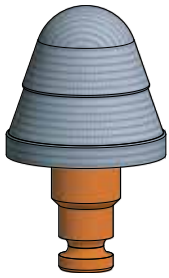


■ **BKF10**
BS38F-25.7077

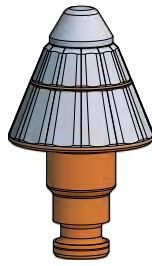


■ **BSR435**
BG38S-22.8358P
WITH HARD FACING

▶ ROUND SHANK CUTTER BITS



• **E2046**
BSRHLK166/S76x60
WITH HARD FACING



• **BSR367**
BS76X-D70.160150

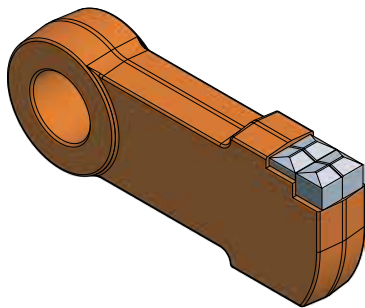


IMAGE SOURCE: TerraSource Global

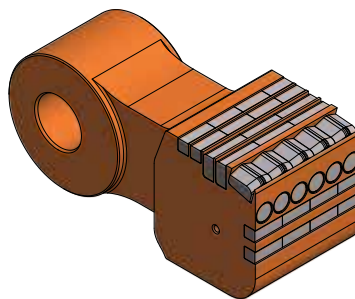
WEAR PARTS FOR HAMMER CRUSHERS

► TUNGSTEN CARBIDE HAMMERS

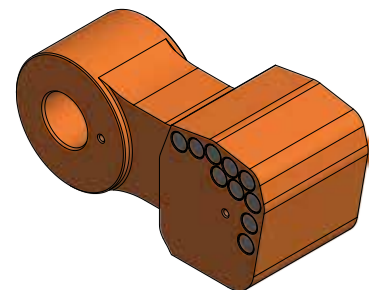
BETEK's tungsten carbide hammer heads are the perfect solution for your hammer crusher. Middle hard rock, as well as different kind of ores can be crushed without any wear problems



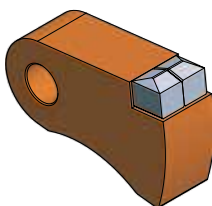
■ **E3677**
BBM 335x125x59



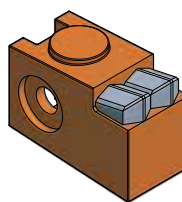
■ **BBM197**
BBM 495x210x200



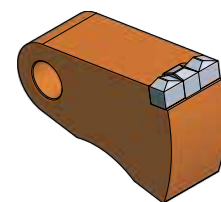
■ **BBM198**
BBM 505x230x200



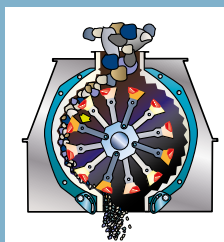
■ **E3417**
BBM 157x101x48



■ **E3967**
BBM 120x87x172



■ **E3418**
BBM 221x142x78

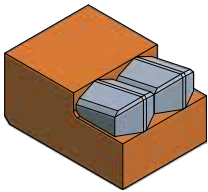


HAMMER HEADS

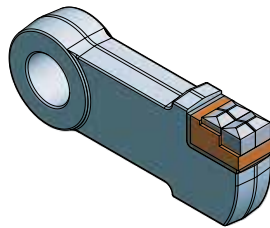
Tungsten carbide gives our hammer heads the ability to keep their original edge for an extended period of time, therefore improving crushing capacity.

► QUICK-CHANGE SYSTEMS

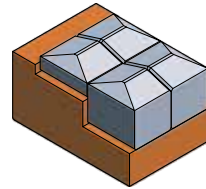
Tungsten carbide keeps the cutting edges in original condition and prevents the hammer head from rounding off. The result is improved crushing productivity and profitability.



■ **E3822**
BBM 120x85x88



■ **E3636 + E3637**
BBM 335x125x59



■ **E3637**
BBM 75x50x47

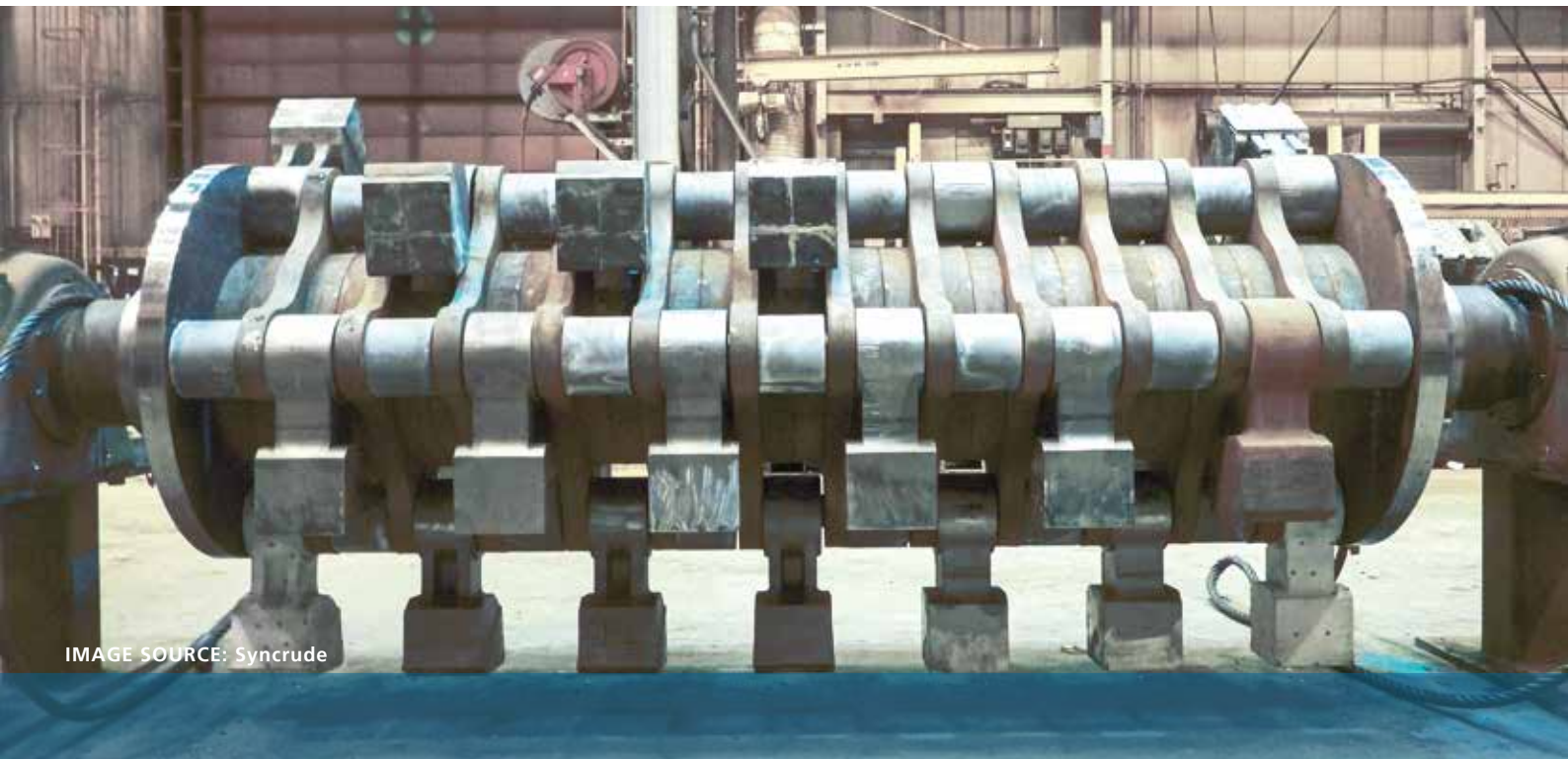
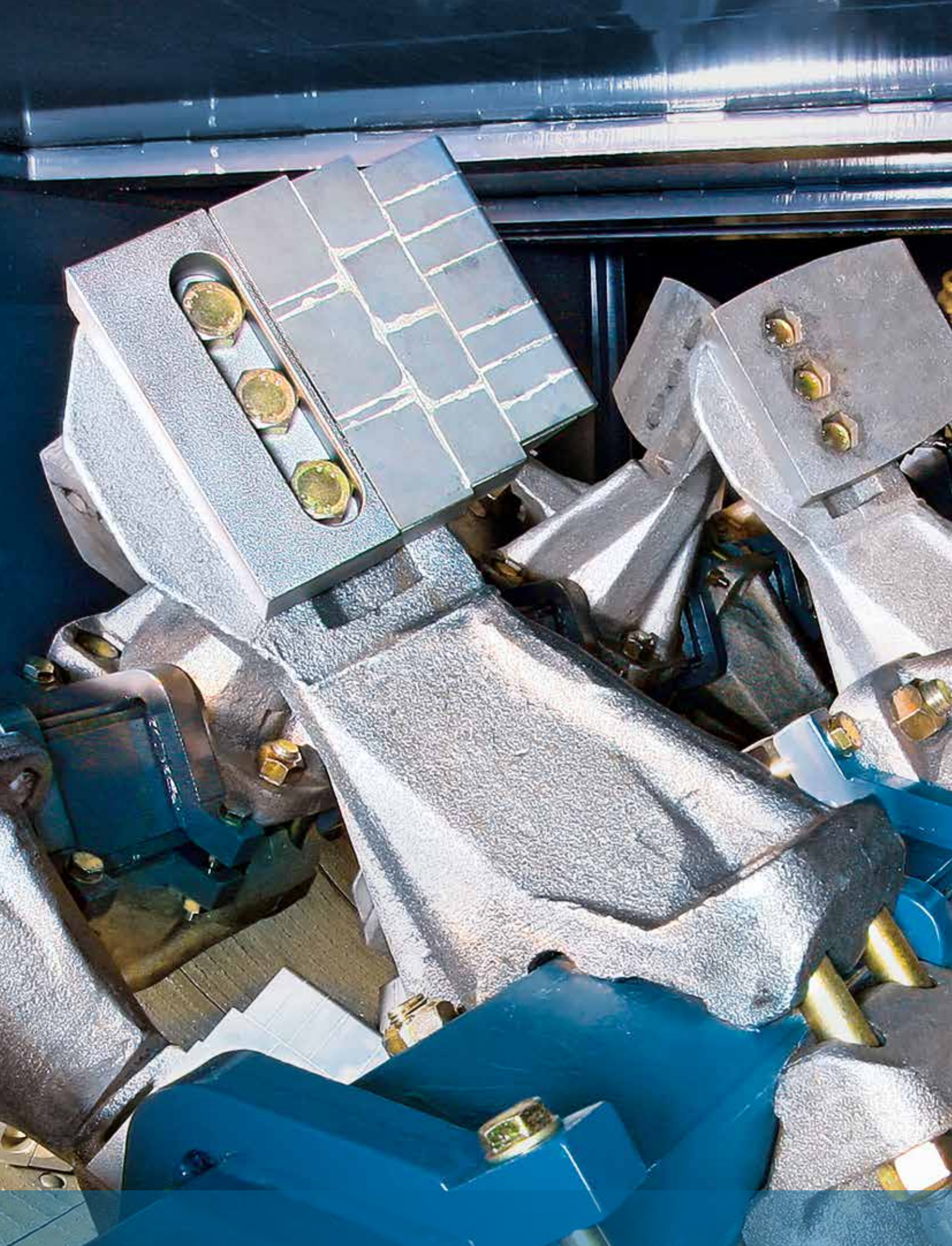
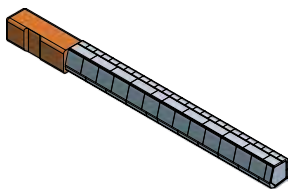


IMAGE SOURCE: Syncrude

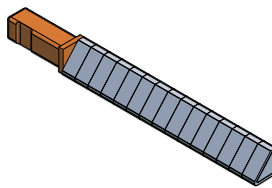


WEAR PARTS FOR MIXERS AND VIBRATING TABLES

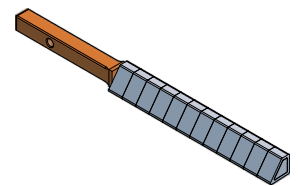
> MIXERS



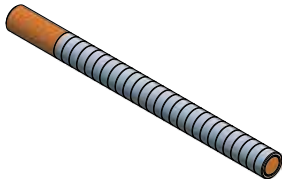
▪ **BBM44**
BBM 585x44x44/OL
MIXING ARMS



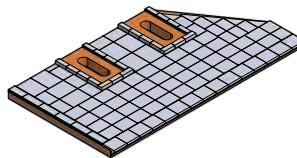
▪ **BBM73**
BBM 585x54x54
MIXING ARMS



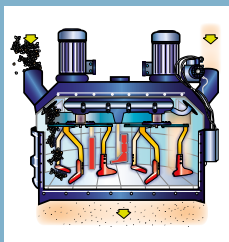
▪ **BBM51**
BBM 577x43x39/CL
MIXING ARMS



▪ **BBM45**
BBM d=40x585
MIXING ARMS



▪ **E2454**
BBM 450x252x22
WALL SCRAPERS

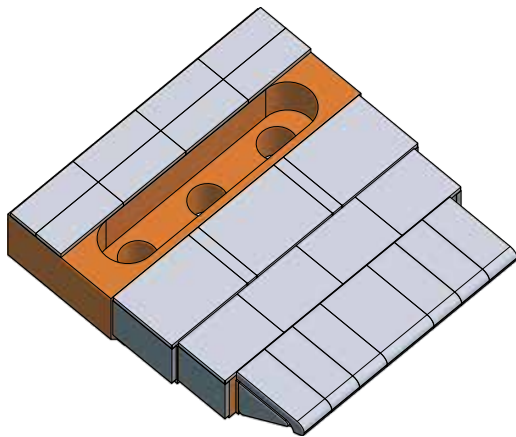


MIXING ARMS

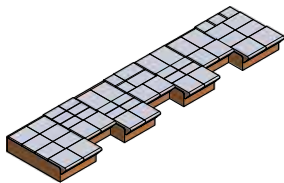
This tool is used as a blunger in batch mixing units and is protected against wear by Betek tungsten carbide.

WEAR PARTS FOR MIXERS AND VIBRATING TABLES

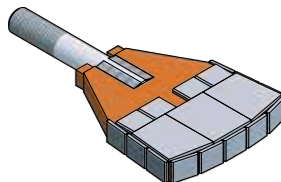
> MIXERS



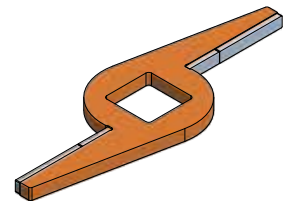
■ **BFS435**
BFS 160x140x40
WEAR PADDLE



■ **E3520**
BBM 375x100x24
MIXER BLADE



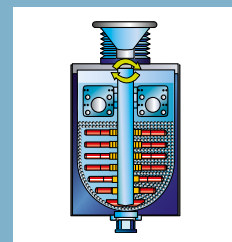
■ **BFS415**
197-15 / S-C-H
MIXER BLADE



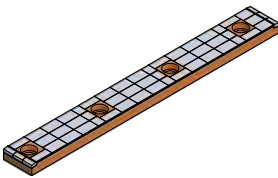
■ **BBM30**
BBM 150x50x6
MIXER PADDLE

MIXER PADDLE

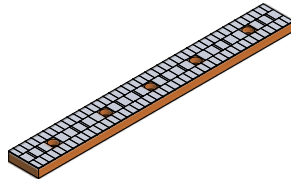
Betek's mixer paddles are successfully used in mobile asphalt mixing plants.



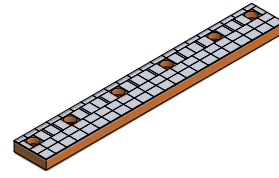
► VIBRATION BARS



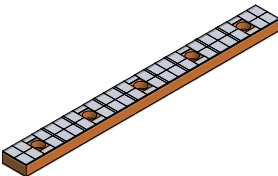
■ **BBM70**
BBM 525x60x20



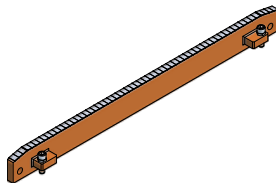
■ **BBM111**
BBM 850x100x30



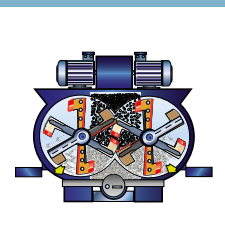
■ **BBM112**
BBM 740x100x30



■ **BBM113**
BBM 740x70x30

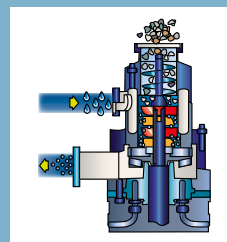


■ **BBM80**
BBM 1378x112x30



MIXER BLADE

Our tungsten carbide equipped mixer blade is ideally suited for mixing and crushing very abrasive materials, such as quartz sand or ceramic raw materials.



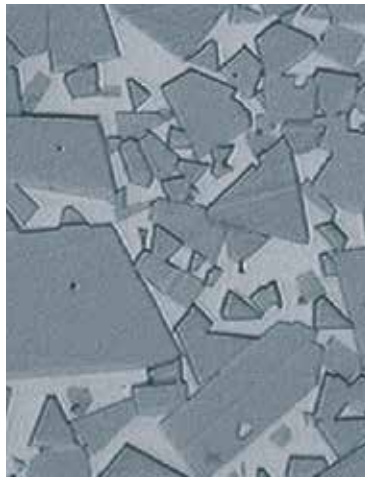
WEAR PADDLE

Betek tungsten carbide protects the paddle against wear caused by abrasive material.

TUNGSTEN CARBIDE IS NOT JUST TUNGSTEN CARBIDE

High levels of hardness in combination with optimum durability and aligned to the specific purpose ensure the tools have exceptional life time.

Since best quality comes first at BETEK, we only use the highest quality and purest raw materials.



FLEXIBLE WEAR PROTECTION

› BeCoat® HARDFACING TYPES



FeCr
hardfacing



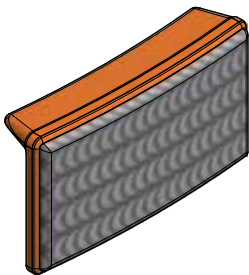
NiCr + FTC
hardfacing



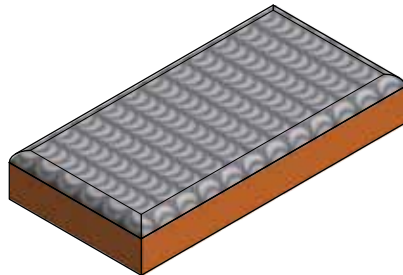
TC grit
hardfacing

› BeCoat® ADVANTAGES

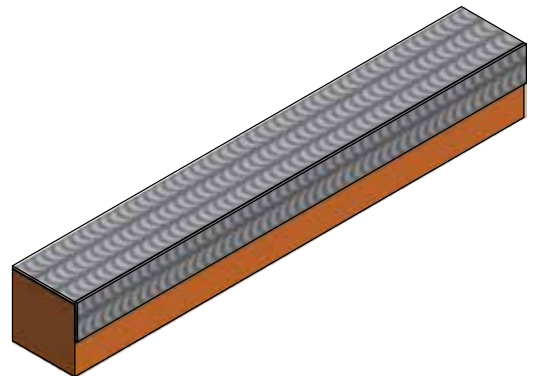
- Cost reduction due to less downtime
- Coating thickness $\leq 6\text{mm}$
- Evenly distributed fused tungsten carbide (FTC) and low dilution
- Engineering and consulting
- Proven to withstand even the harshest environments



▪ **BA73**
BA 72x40x17



▪ **BBM386**
BBM 100x50x16



▪ **BBM391**
BBM 180x26x26

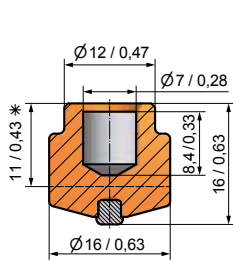


EXTENSIVE WEAR PROTECTION

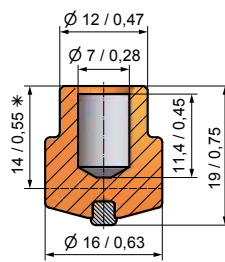


► OVERVIEW

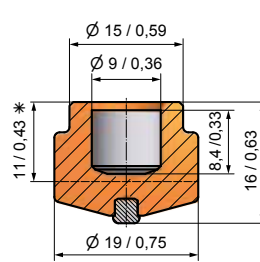
Betek can provide the appropriate stud welding machine for the TungStuds wear protection system.



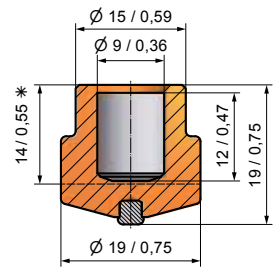
■ **BTS01** BTSD16/16 



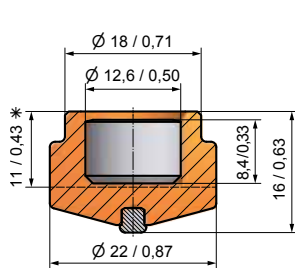
■ **BTS02** BTSD16/19 



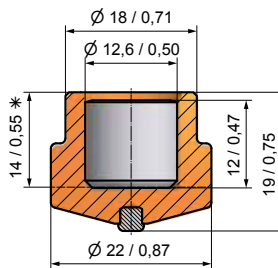
■ **BTS03** BTSD19/16 



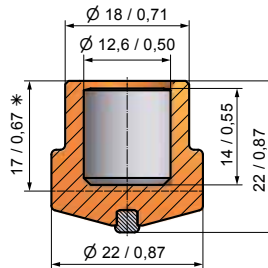
■ **BTS04** BTSD19/19 



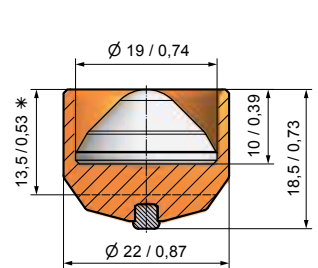
■ **BTS05** BTSD22/16 



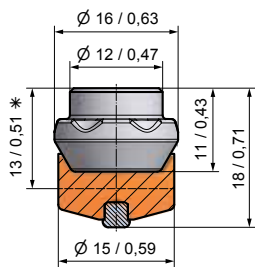
■ **BTS06** BTSD22/19 



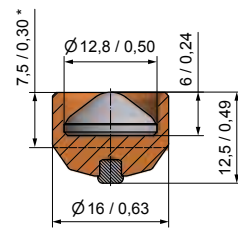
■ **BTS07** BTSD22/22 



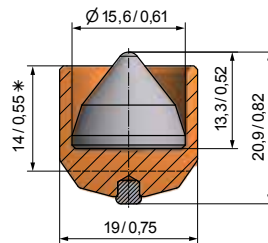
■ **BTS08** BTSD22/18,5SG 



■ **BTS10B** BTSD16/18B 



■ **BTS20** BTSD16/12,5SG 



■ **BTS100** BTSD19/15,6SG 

*Height after welding





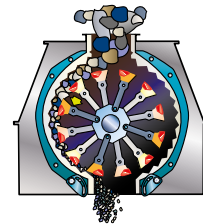
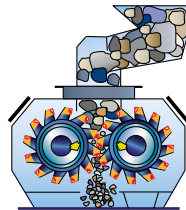
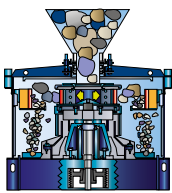
YOUR INQUIRY

For your inquiry we need some additional information. Please send us the following data together with your inquiry to the contacts below, or give us a call.

► CRUSHING - YOUR DATA

- Machine
- Crusher type
- Application
- Feeding material
- Feeding material size
- Crushing tons per hour

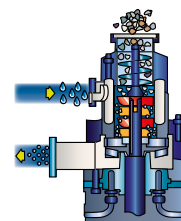
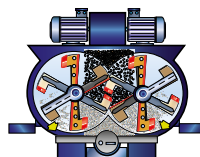
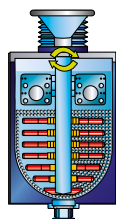
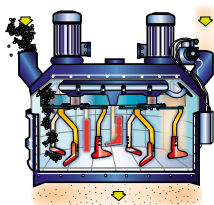
Please send your request for quotation to
info@betek.de call us: +49 (0)7422-565-7025



► MIXING - YOUR DATA

- Mixing machine
- Mixer type
- Capacity
- Application/ industry (e.g. concrete mixing,...)
- Feeding material size
- Wet/ dry operation/ additives
- Time per mixing cycle

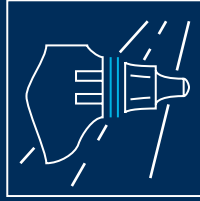
Please send your request for quotation to
info@betek.de call us: +49 (0)7422-565-7025







➤ BETEK



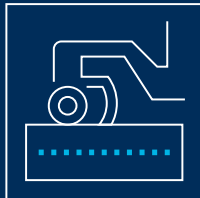
SURFACE TECHNOLOGIES

- ROAD MILLING
- SURFACE MINING
- STABILISING



UNDERGROUND TECHNOLOGIES

- FOUNDATION DRILLING
- MINING
- TRENCHLESS
- TRENCHING
- TUNGSTUDS
- DRUM CUTTERS



ENVIRONMENTAL TECHNOLOGIES

- AGRICULTURE
- GRADER TOOLS
- FORESTRY & RECYCLING



INDUSTRIAL TECHNOLOGIES

- CRUSHING & MIXING
- TUNGSTEN CARBIDE
- RAIL TRACK CONSTRUCTION
- INDUSTRIAL SOLUTIONS

Service number
+49 (0) 7422. 565-0

info@betek.de
www.betek.de